



Government of India
Ministry of Earth Sciences
India Meteorological Department



Press Release

Date: 10th June, 2025

Time of Issue: 1345 hours IST

Subject: (i) Monsoon likely to be in active phase with heavy to very heavy rainfall at a few places and extremely heavy falls at isolated places over south peninsular India during 12th-16th June and over Konkan & Goa on 13th & 14th June, 2025.

(ii) Heat Wave conditions are likely to continue over Northwest India with severe heat wave conditions at isolated pockets over West Rajasthan till 12th and abate thereafter.

Southwest Monsoon: (Annexure I):

- ❖ The Northern Limit of Monsoon continues to pass through 17.0°N/55°E, 17.5°N/60°E, 18°N/65°E, 18.5°N/70°E, Mumbai, Ahilyanagar, Adilabad, Bhawanipatna, Puri, Sandhead Island, 23.5°N/89.5°E, Balurghat, 30°N/85°E.
- ❖ Conditions are favourable for advance of Monsoon over some more parts of Central and adjoining East India around 14th June.

Realised weather during past 24 hours till 0830 hours IST of today, the 10th June, 2025 (Annexure II):

- ❖ **Heat wave conditions** prevailed at many places with **severe heat wave conditions** at isolated places over West Rajasthan; Heat wave conditions at isolated places over Jammu & Kashmir, Haryana, West Uttar Pradesh, East Rajasthan
- ❖ **Heavy rainfall** has been recorded at isolated places over Odisha, Marathawada, Tamil Nadu.
- ❖ **Thunderstorm accompanied with Squally/Gusty winds** with speed 30-70 kmph at isolated places over Tamilnadu Puducherry & Karaikal, Kerala & Mahe, Interior Karnataka, Coastal Andhra Pradesh & Yanam, Rayalaseema, Telangana, Marathawada, Arunachal Pradesh, Odisha, Saurashtra & Kutch, Jharkhand, Vidarbha, Andaman & Nicobar Islands, Madhya Maharashtra, East Madhya Pradesh, Haryana, Gujarat Region, Punjab, West Uttar Pradesh, Tripura, Gangetic West Bengal, Uttarakhand

For more details of realised weather, kindly refer **Annexure II**,

Detailed observations of Maximum Temperature during past 24 hours till 0830 hours IST of today are appended in **Annexure III**.

i. Weather Systems, Forecast and Warnings (refer to Annexure IV & V):

- ❖ An **upper air cyclonic circulation** lies over north Chhattisgarh in lower tropospheric levels.
- ❖ A **trough** runs from northwest Uttar Pradesh to west central Bay of Bengal in lower tropospheric levels.
- ❖ An **upper air cyclonic circulation** lies over north Haryana and another over north Pakistan & neighbourhood off Punjab in lower tropospheric levels.

- ❖ An **upper air cyclonic circulation** over central parts of south Uttar Pradesh & neighbourhood in lower tropospheric levels.
- ❖ An **upper air cyclonic circulation** lies over north Odisha & neighbourhood in lower & middle tropospheric levels tilting southwards with height.
- ❖ A **trough** runs as a shear zone roughly along Lat. 15°N over the Indian Region in middle tropospheric levels.
- ❖ A **Western Disturbance** as a trough in middle tropospheric westerlies runs roughly along Long. 62°E to the north of Lat. 28°N.
- ❖ Under the influence of these systems, the following weather is likely:

South Peninsular India:

- ✓ Light/moderate rainfall at most/many places over Kerala & Mahe, Karnataka, Lakshadweep during next 7 days and Light/moderate rainfall at many/some places accompanied with isolated **thunderstorm, lightning & gusty winds speed reaching 30-50 kmph** over Tamil Nadu, Puducherry & Karaikal, Interior Karnataka, Telangana during 10th-14th June.
- ✓ **Strong surface winds** (speed 50-60 kmph) very likely over Coastal Andhra Pradesh & Yanam, Rayalaseema during 10th -12th, Kerala & Mahe, Lakshadweep on 14th June.
- ✓ Isolated **heavy rainfall** likely over Tamilnadu Puducherry & Karaikal, Kerala & Mahe, Coastal Andhra Pradesh & Yanam during 10th-12th, Karnataka on 10th & 11th, Lakshadweep on 13th & 14th, Rayalaseema and Telangana on 11th & 12th with **very heavy rainfall** over Tamilnadu Puducherry & Karaikal, Kerala & Mahe during 12th-16th, Coastal Karnataka on 16th, North Interior Karnataka during 12th-15th, South Interior Karnataka on 15th & 16th with **Extremely heavy rainfall** likely over Kerala & Mahe during 14th-16th, Coastal Karnataka during 12th-16th, South Interior Karnataka during 12th-14th and over North Interior Karnataka on 13th, Tamilnadu Puducherry & Karaikal on 14th & 15th June.

West India:

- ✓ Light/moderate rainfall at some/isolated places accompanied with accompanied with **thunderstorm, lightning & gusty winds speed reaching 30-50 kmph** likely over Madhya Maharashtra, Marathwada, Konkan & Goa on 10th & 11th June with **Thundersquall (wind speed reaching 50-60 kmph gusting to 70 kmph)** very likely at isolated places over Madhya Maharashtra, Marathwada, Konkan & Goa during 12th-14th June.
- ✓ Isolated **heavy rainfall** likely over Madhya Maharashtra on 10th & 11th, Marathwada during 11th-14th with **very heavy rainfall** on Konkan & Goa, Madhya Maharashtra during 12th-16th June with **Extremely heavy rainfall** likely over Konkan & Goa on 13th & 14th June.

East & Central India:

- ✓ Light/moderate rainfall at some places likely to continue over Sub-Himalayan West Bengal & Sikkim during next 7 days and Light/moderate rainfall at isolated/some places accompanied with **thunderstorm, lightning & gusty winds speed reaching 40-50 kmph** likely over Andaman & Nicobar Islands during 10th-12th, Madhya Pradesh, West Bengal & Sikkim, Jharkhand, Odisha during 11th-14th, Bihar during 13th-16th June with **Thundersquall (wind speed reaching 50-60 kmph gusting to 70 kmph)** very likely at isolated places over Vidarbha on 11th & 12th, Chhattisgarh during 11th-14th, Bihar on 12th & 13th June.
- ✓ Isolated **heavy rainfall** also likely over Andaman & Nicobar Islands on 12th; Sub-Himalayan West Bengal & Sikkim during 13th-16th and over Odisha on 10th and during 14th-16th June.

Northwest India:

- ✓ Light/moderate rainfall at some/isolated places accompanied with accompanied with **thunderstorm, lightning & gusty winds speed reaching 40-50 kmph** likely over Jammu-Kashmir-Ladakh-Gilgit-Baltistan-Muzaffarabad during 10th-12th, Himachal Pradesh, Haryana, Uttar Pradesh, Uttarakhand during 12th-16th, West Rajasthan during 14th-16th June.
- ✓ Isolated **heavy rainfall** likely over Uttarakhand during 12th-16th June.

Northeast India:

- ✓ Light/moderate rainfall at many/some places likely to continue over northeast India during next 7 days with **isolated heavy rainfall** over Arunachal Pradesh, Assam & Meghalaya during 11th-16th; Nagaland, Manipur, Mizoram & Tripura during 10th-16th June.
- ✓ Light/moderate rainfall at some/isolated places accompanied with **thunderstorm, lightning & gusty winds speed reaching 30-40 kmph** over Assam & Meghalaya, Nagaland, Manipur, Mizoram & Tripura on 10th & 11th June.

Maximum Temperature Forecast:

- ❖ No significant change in maximum temperatures likely over Northwest India during next 4 days and gradual fall by 2-4°C thereafter.
- ❖ No significant change in maximum temperatures likely over Central & East India during next 2-3 days and gradual fall by 2-3°C thereafter.
- ❖ No significant change in maximum temperatures likely over rest parts of the country.

Heat wave, Hot & Humid weather and Warn Night warnings:

- ❖ **Heat wave condition** very likely at many/some places over West Rajasthan during 10th-16th with **severe heat wave conditions** at isolated/some parts during 10th-13th June.
- ❖ **Heat wave to severe heat wave conditions** very likely at isolated/some parts are likely to prevail over East Rajasthan during 10th-13th June.
- ❖ **Heat wave conditions** are likely to prevail over East Uttar Pradesh on 10th & 11th, Punjab during 10th-13th, Jammu-Kashmir-Ladakh-Gilgit-Baltistan-Muzaffarabad, Himachal Pradesh, Haryana, West Uttar Pradesh, north Madhya Pradesh during 10th-12th June.
- ❖ **Hot & humid weather** is likely to prevail over Sub-Himalayan West Bengal & Sikkim on 10th, Gangetic West Bengal, Bihar, Odisha on 10th & 11th June.
- ❖ **Warm night conditions** very likely in isolated pockets over Punjab, Haryana on 10th & 11th, West Uttar Pradesh on 10th, Rajasthan during 10th-12th June.

Fishermen Warnings:

- ❖ Fishermen are advised not to venture along and off the Somalia coast and adjoining sea areas for day 1 to day 5.
 - ❖ Fishermen are advised not to venture over Comorin area from day 1 today 5; south Bay of Bengal for day 1 to day 5, adjoining parts of central Bay of Bengal for day 3 to day 5; Along and off Karnataka ,Kerala coasts for day 3, day 4 & day 5, south Konkan coast for day 3, south Konkan and adjoining north Konkan coasts for day 4 & entire Konkan coast for day 5; over Lakshadweep, Maldives areas for day 3, day 4 & day 5; over southeast Arabian Sea, many parts of eastcentral Arabian Sea, northern parts of southwest and southern parts of westcentral Arabian Sea for day 5; along and off Tamil Nadu coast for day 1 to day 5, along and off Tamil Nadu coast and adjoining south Andhra Pradesh coast on day 1, along and off south Andhra Pradesh coast for day 2 and day 3.
 - ❖ Fishermen are advised not to venture over the Gulf of Mannar from day 1 to day 5.
 - ❖ Fishermen are advised not to venture over Andaman Sea from day 1 to day 5.
- Total suspension of fishing operations is suggested over above mentioned areas and dates.

ii. Weather conditions and forecast over Delhi/NCR during 10th June to 13th June, 2025 (Annexure VI)

For more details, kindly refer National Weather Bulletin:

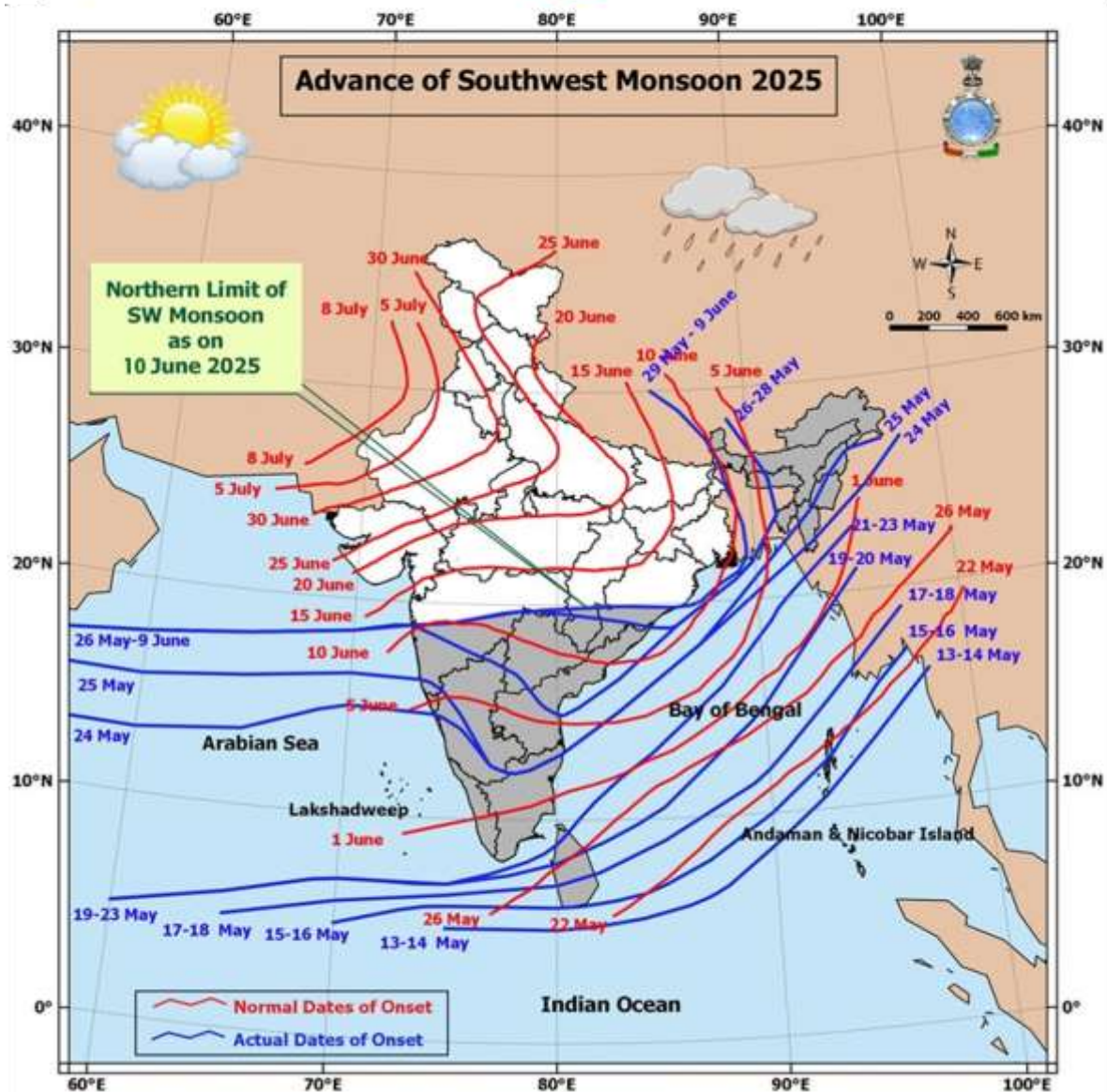
https://mausam.imd.gov.in/responsive/all_india_forecast_bulletin.php

For District wise warnings refer: <https://mausam.imd.gov.in/responsive/districtWiseWarningGIS.php>

राष्ट्रीय मौसम पूर्वानुमान केन्द्र
भारत मौसम विज्ञान विभाग
पृथ्वी विज्ञान मंत्रालय



National Weather Forecasting Centre
Indian Meteorological Department
Ministry of Earth Sciences



Significant weather reported during past 24 hours till 0830 hours IST of today:**Rainfall recorded (in cm) reported during past 24 hours till 0830 hours IST of today, the 10th June:**

- ❖ **Odisha:** Chikiti (dist Ganjam) 9; Phiringia (dist Kandhamal), Tikabali (dist Kandhamal), Akhuapada (dist Bhadrak) 8 Each; Bhanjnagar (dist Ganjam), Madanpur Rampur (dist Kalahandi) 7 Each;
- ❖ **Tamil Nadu, Puducherry & Karaikal:** Perambalur (dist Perambalur) 7;
- ❖ **Marathwada:** Renapur (dist Latur) 7.

Realised Gusty Winds (kmph) During Past 24hours ending at 0830 hrs IST of today the 10th June:

- ❖ **Marathwada:** Hingoli(Tondapur) 68;
- ❖ **Arunachal Pradesh:** Lowertato 59, Anini 46, Kalaktang 37, Dirang 33, Tuting31;
- ❖ **Odisha:** Kendrapara (57), Pitapalli(56), Phulbani(50), Cuttuck_Kvk (48), Ranital(46), Angul(43) Sonepur (37);
- ❖ **Saurashtra & Kutch:** Amreli (Dhari Aws) 52;
- ❖ **Jharkhand:** Ranchi (52), Ramghar (35), Bokaro(33)
- ❖ **Vidarbha:** Nagpur 50;
- ❖ **Andaman & Nicobar Islands:** Sri Vijaya Puram(50 Km/H),
- ❖ **Madhya Maharashtra:** Jalgaon 46;
- ❖ **East Madhya Pradesh:** Sagar 41;
- ❖ **Haryana:** Hisar 41, Kaithal 39, Rohtak, Jind, Gurgaon, Panipat 37 Each, Faridabad, Chandigarh, Kurukshetra 30 Each;\Himachal Pradesh: Kukumseri 39;
- ❖ **Gujarat Region:** Ahmedabad (Arnej_ Afmu) 39;
- ❖ **Punjab:** Fazilka 39, Hoshiarpur, Mohali, Moga 33 Each, Fatehgarh, Sangrur 30 Each;
- ❖ **West Uttar Pradesh:** Agra 37;
- ❖ **Tripura:** Gandhacherra 34;
- ❖ **Gangetic West Bengal:** Kolkata Airport (33);
- ❖ **Uttarakhand:** Ranichauri 31, Pantnagar 31;

Temperature observations during past 24 hours till 0830 hours IST of today:

- ❖ Yesterday, **Maximum temperatures are in the range of 43-47°C** over most places of Rajasthan; few places over Madhya Pradesh; in isolated places over Punjab, Haryana-Chandigarh-Delhi. They were in the **range of 39-43 °C** over many places of Vidarbha, Chhattisgarh; few places of Jammu division, Uttar Pradesh, Bihar, Coastal Andhra Pradesh & Yanam, Gujarat state; isolated places over Odisha, Jharkhand, Telangana. They were in the **range of 35-39°C** over many places over Gangetic West Bengal, Marathwada; few places over Assam & Meghalaya, Tamil Nadu, Puducherry & Karaikal, Rayalaseema; at isolated places over Madhya Maharashtra, Nagaland, Manipur, Mizoram & Tripura and **below 35 °C**, elsewhere in the remaining part of the country. Yesterday, **The highest maximum temperature of 47.3°C was reported at Sri Ganganagar (Rajasthan).**
- ❖ Yesterday, **Maximum Temperature were markedly above normal (> 5.1°C)** at most places over Arunachal Pradesh; at few places over Assam & Meghalaya, Jammu-Kashmir-Ladakh-Gilgit-Baltistan-Muzaffarabad and East Madhya Pradesh; at isolated places over Sub Himalayan West Bengal & Sikkim, East Uttar Pradesh, Haryana-Chandigarh-Delhi, Himachal Pradesh, West Madhya Pradesh and Coastal Andhra Pradesh & Yanam. **appreciably above normal (3.1°C to 5.0°C)** at most places over Bihar and Punjab; at few places over West Uttar Pradesh and West Rajasthan; at isolated places over Nagaland, Manipur, Mizoram & Tripura, Gangetic West Bengal, Odisha, Uttarakhand, East Rajasthan, Tamil Nadu, Puducherry & Karaikal and Kerala & Mahe. **above normal (1.6°C to 3.0°C)** at few places over Vidarbha and Lakshadweep; at isolated places over Jharkhand, Saurashtra & Kutch and Chhattisgarh. **near normal (-1.5°C to 1.5°C)** at many places over Madhya Maharashtra, Marathwada and South Interior Karnataka; at most places over Gujarat Region, Konkan & Goa, Coastal Karnataka and North Interior Karnataka; at few places over Andaman & Nicobar Islands, Telangana and Rayalaseema.

Fig.1: Maximum Temperatures

Fig.2: Departure of Maximum Temperatures

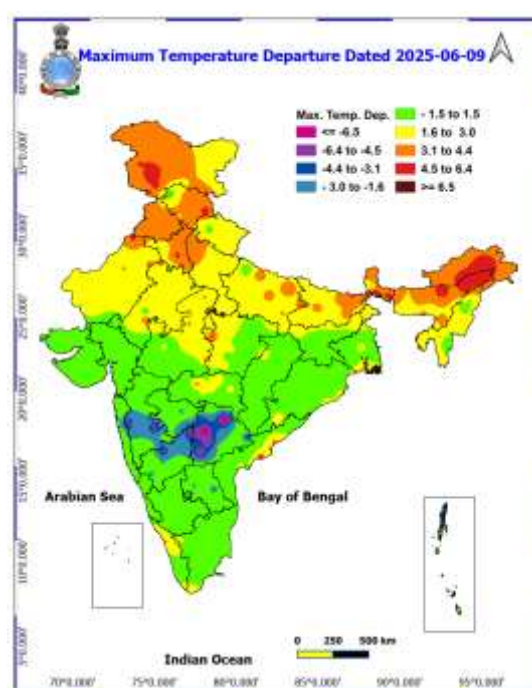
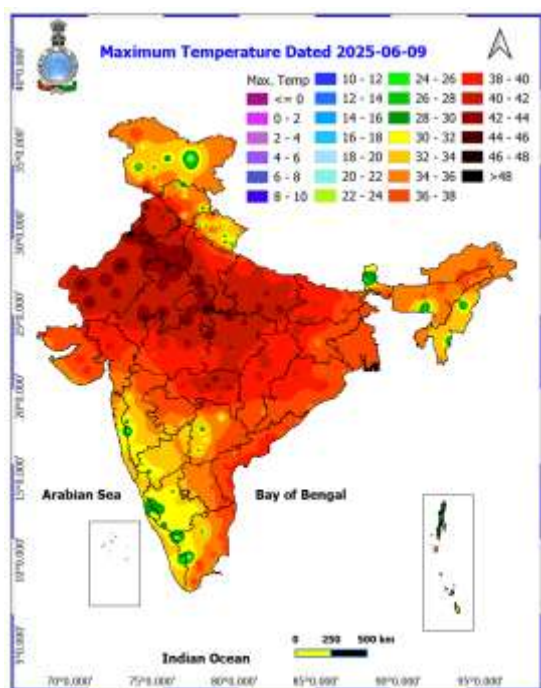
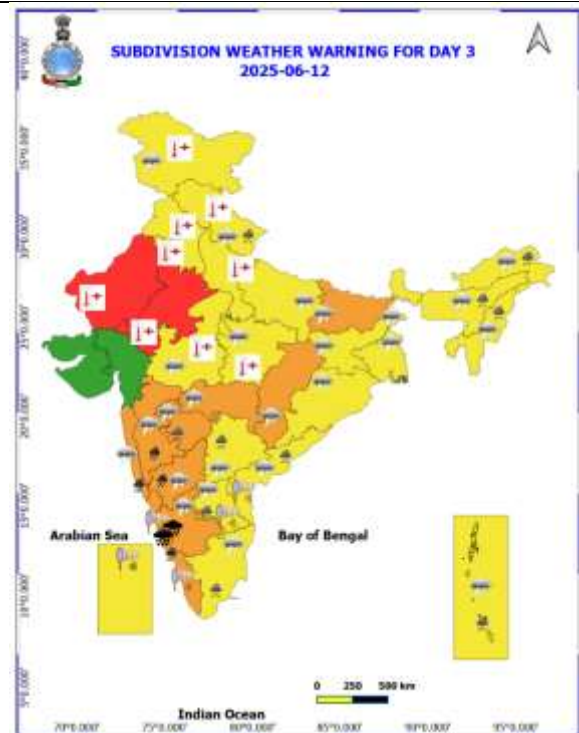
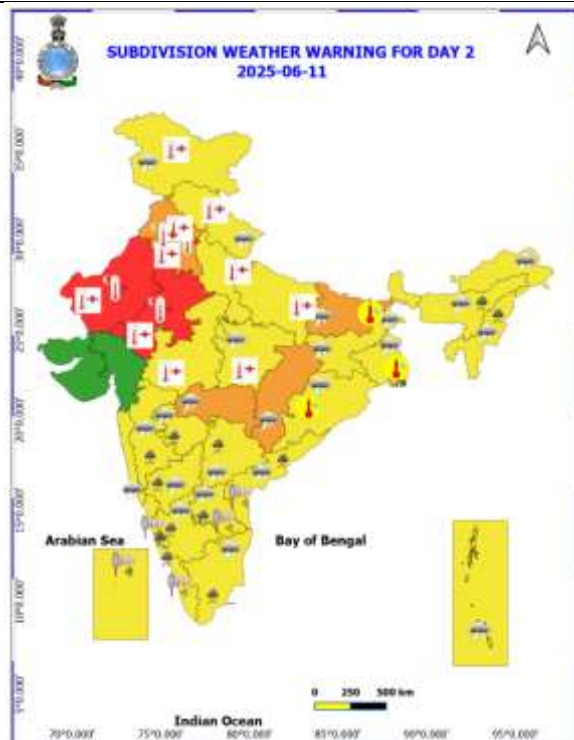
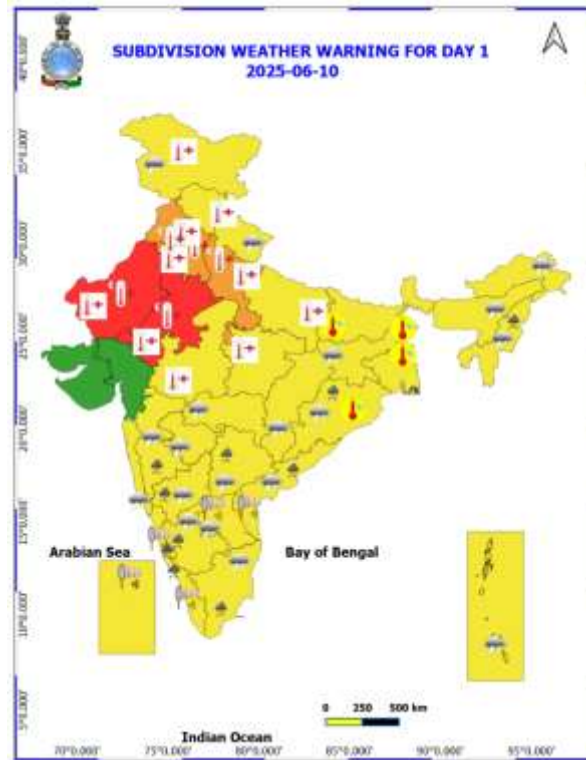
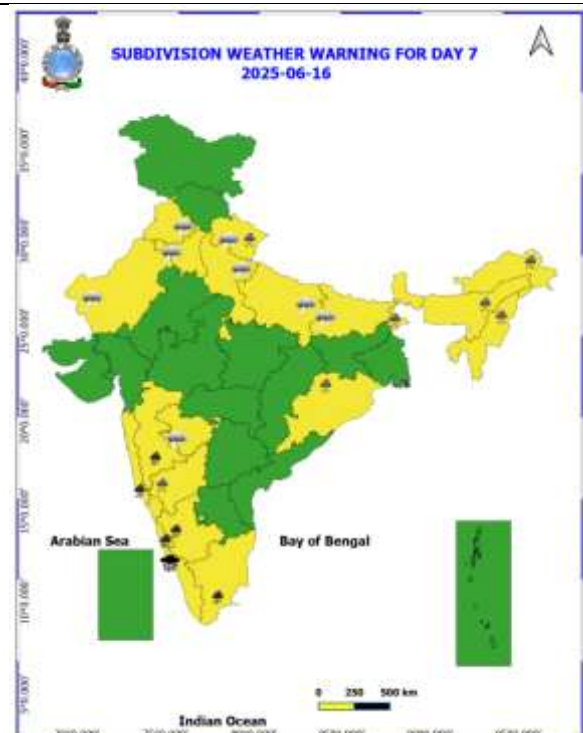
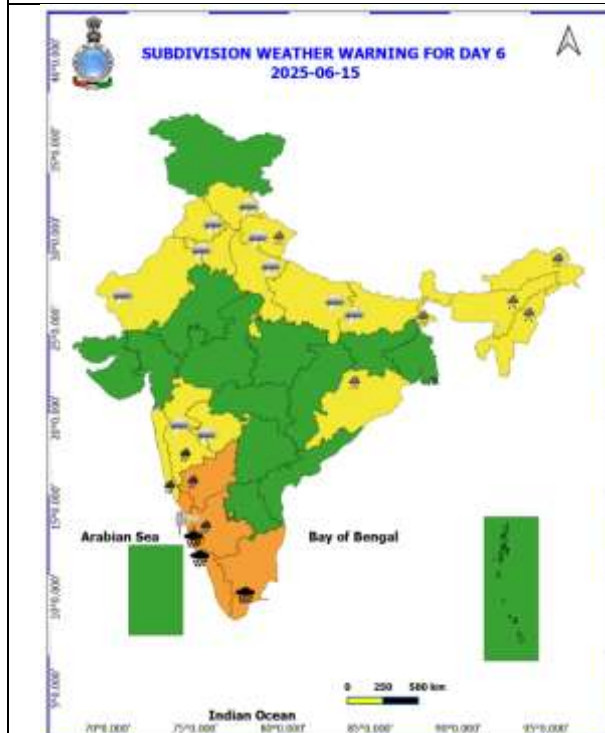
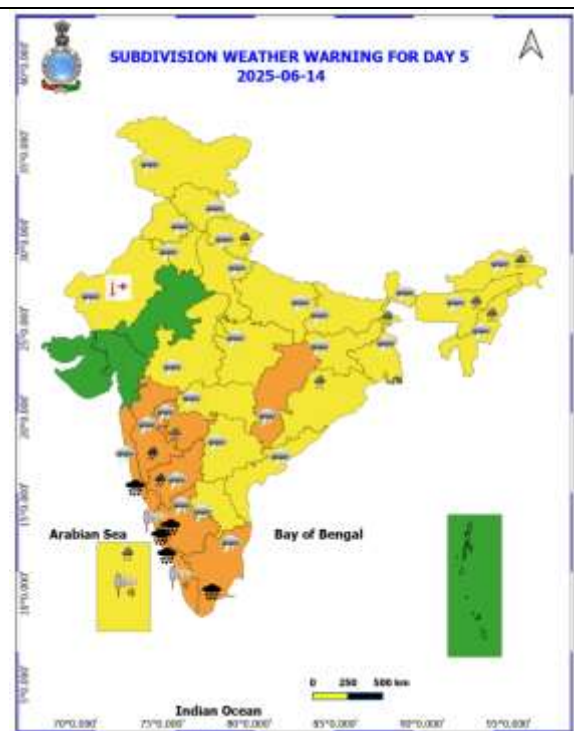
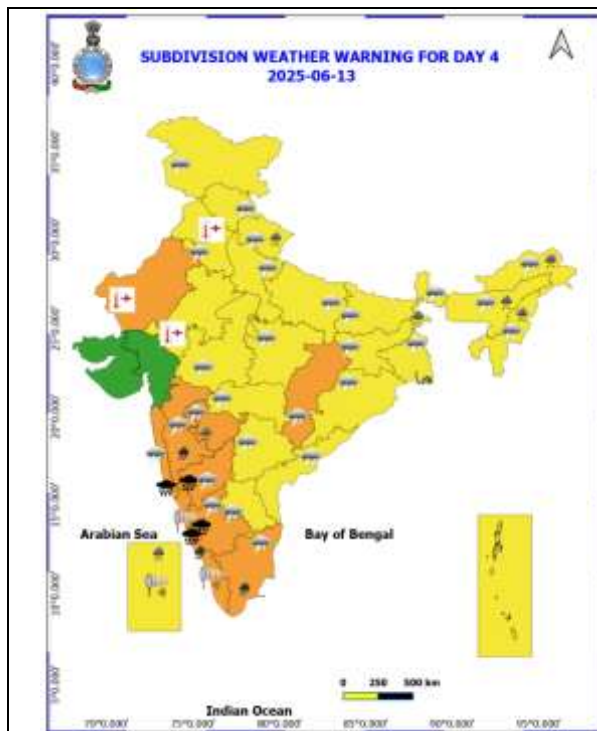


Table-1								
7 Days Rainfall Forecast								
S.No.	Subdivision	10- Jun	11- Jun	12- Jun	13- Jun	14- Jun	15- Jun	16- Jun
		Day 1	Day 2	Day 3	Day 4	Day 5	Day 6	Day 7
1	ANDAMAN & NICOBAR ISLANDS	WFS	WFS	WFS	FWS	FWS	FWS	FWS
2	ARUNACHAL PRADESH	ISOL	SCT	SCT	FWS	FWS	FWS	FWS
3	ASSAM & MEHGHALAYA	SCT	FWS	SCT	SCT	SCT	FWS	FWS
4	NAGALAND, MANIPUR, MIZORAM AND TRIPURA	FWS	FWS	SCT	SCT	FWS	FWS	FWS
5	SUB HIMALAYAN WEST BENGAL & SIKKIM	ISOL	SCT	FWS	FWS	FWS	FWS	FWS
6	GANGETIC WEST BENGAL	ISOL	SCT	FWS	FWS	FWS	FWS	FWS
7	ODISHA	SCT	SCT	SCT	SCT	SCT	SCT	SCT
8	JHARKHAND	ISOL	SCT	SCT	SCT	FWS	FWS	FWS
9	BIHAR	ISOL	SCT	FWS	SCT	SCT	SCT	SCT
10	EAST UTTAR PRADESH	DRY	ISOL	ISOL	SCT	SCT	SCT	ISOL
11	WEST UTTAR PRADESH	DRY	DRY	ISOL	ISOL	ISOL	SCT	SCT
12	UTTARAKHAND	ISOL	SCT	FWS	FWS	FWS	FWS	FWS
13	HARYANA, CHANDIGARH & DELHI	DRY	DRY	DRY	ISOL	ISOL	ISOL	SCT
14	PUNJAB	DRY	DRY	DRY	DRY	ISOL	ISOL	ISOL
15	HIMACHAL PRADESH	DRY	DRY	DRY	ISOL	ISOL	SCT	SCT
16	JAMMU AND KASHMIR AND LADAKH	DRY	DRY	DRY	ISOL	ISOL	ISOL	ISOL
17	WEST RAJASTHAN	DRY	DRY	DRY	DRY	DRY	DRY	DRY
18	EAST RAJASTHAN	DRY	DRY	DRY	DRY	ISOL	ISOL	ISOL
19	WEST MADHYA PRADESH	ISOL	ISOL	ISOL	ISOL	ISOL	SCT	SCT
20	EAST MADHYA PRADESH	ISOL	ISOL	ISOL	ISOL	ISOL	SCT	SCT
21	GUJRAT REGION	ISOL	ISOL	ISOL	ISOL	ISOL	ISOL	ISOL
22	SAURASHTRA & KUTCH	ISOL	ISOL	ISOL	ISOL	ISOL	ISOL	ISOL
23	KONKAN & GOA	SCT	SCT	FWS	WFS	WFS	WFS	WFS
24	MADHYA MAHARASHTRA	ISOL	ISOL	SCT	SCT	FWS	WFS	WFS
25	MARATHWADA	SCT	SCT	SCT	FWS	FWS	SCT	SCT
26	VIDARBHA	ISOL	SCT	SCT	SCT	FWS	FWS	FWS
27	CHHATTISGARH	ISOL	ISOL	SCT	SCT	SCT	SCT	SCT
28	COASTAL ANDHRA PRADESH	ISOL	FWS	FWS	SCT	ISOL	ISOL	ISOL
29	TELANGANA	SCT	SCT	FWS	FWS	FWS	SCT	SCT
30	RAYALASEEMA	SCT	WFS	WFS	FWS	ISOL	ISOL	ISOL
31	TAMILNADU & PUDUCHERRY	SCT	SCT	SCT	SCT	SCT	SCT	SCT
32	COSTAL KARNATAKA	WFS	WFS	WFS	WFS	WFS	WFS	WFS
33	NORTH INTERIOR KARNATAKA	FWS	FWS	WFS	WFS	WFS	WFS	WFS
34	SOUTH INTERIOR KARNATAKA	WFS	WFS	WFS	WFS	WFS	WFS	WFS
35	KERALA AND MAHE	WFS	WFS	WFS	WFS	WFS	WFS	WFS
36	LAKSHADWEEP	WFS	WFS	WFS	WFS	WFS	WFS	WFS

- As the lead period increases forecast accuracy decreases.





- Action may be taken based on ORANGE AND REDCOLOUR warnings.
- Vulnerable regions likely urban and hilly areas action may be initiated for heavy rainfall warning.
- As the lead period increases forecast accuracy decreases.

Detailed districtwise Multi Hazard weather warning for next five days available at
<https://mausam.imd.gov.in/responsive/districtWiseWarningGIS.php>

Weather forecast over Delhi/NCR during 10th to 13th June 2025

Past Weather:

There has been a slight rise in the minimum temperature and rise in the maximum temperature up to 1°C over Delhi/NCR during the past 24 hours. The maximum and minimum temperatures over Delhi were around 43 to 45°C and 26 to 28° respectively. The minimum temperature was near normal and the maximum temperature was above normal up to 3 - 4°C. Mainly clear sky conditions with predominant surface wind from the west direction with wind speeds up to 20 kmph gusting to 30 kmph prevailed during the past 24 hours. Mainly clear sky conditions with wind speed less than 20 kmph from the west direction prevailed over the region in the forenoon today.

Weather Forecast:

10.06.2025: Mainly clear sky. Heat wave conditions at few places. Dust rising surface winds 20 – 30 kmph occasionally gusting to 40 kmph. The maximum temperatures over Delhi are likely to be in the range of 43 to 45°C. The maximum temperature will be above normal up to 3 - 5°C. The predominant surface wind will likely be from the northwest direction with a wind speed of less than 20 kmph in the afternoon. The wind speed will gradually increase becoming 20-25 kmph from the northwest direction during evening and night.

11.06.2025: Mainly clear sky. Heat wave conditions at isolated places. Dust rising surface winds 15-25 kmph occasionally gusting to 35 kmph. The maximum and minimum temperatures over Delhi are likely to be in the range of 43 to 45°C and 28 to 30°C respectively. The minimum temperature will be above normal up to 1 - 2°C and the maximum temperature will be above normal up to 3 - 5°C. The predominant surface wind will likely be from the northwest direction with a wind speed of less than 20 kmph during the morning hours. The wind speed will gradually decrease becoming 18-20 kmph from the west direction in the afternoon. It will decrease becoming less than 18 kmph from the northwest direction during evening and night.

12.06.2025: Partly cloudy sky. Hot and humid weather condition. Very light to light rain/thunderstorm/lighting accompanied with gusty winds 40 -50 kmph temporary reaching 60 kmph during thunderstorm with dust rising winds towards evening/night. The maximum and minimum temperatures over Delhi are likely to be in the range of 42 to 44°C and 27 to 29°C respectively. The minimum temperature will be near normal and the maximum temperature will be above normal up to 2 - 4°C. The predominant surface wind will likely be from the northwest direction with a wind speed of less than 20 kmph during the morning hours. The wind speed will gradually decrease becoming less than 18 kmph from the northwest direction in the afternoon. It will decrease to less than 10 kmph from the southeast direction during the evening and night.

13.06.2025: Partly cloudy sky. Very light to light rain/thunderstorm/lighting accompanied with gusty winds 40 -50 kmph temporary reaching 60 kmph during thunderstorm with dust rising winds towards evening/night. The maximum and minimum temperatures over Delhi are likely to be in the range of 39 to 41°C and 27 to 29°C respectively. The minimum temperature will be near normal and the maximum temperature will be above normal up to 1 - 2°C. The predominant surface wind will likely be from the northeast direction with a wind speed of less than 15 kmph during the morning hours. The wind speed will gradually decrease becoming less than 10 kmph from the northeast direction in the afternoon. It will increase to less than 15 kmph from the southeast direction during the evening and night.

Impact expected and Action Suggested:

- Be cautious and take precautionary measures though there is likelihood of heat wave conditions. There is likelihood of heat related impact to vulnerable population as the temperatures are likely to be above normal.
- Moderate health concern for vulnerable people e.g. infants, elderly people with chronic diseases.
- Avoid heat exposure, wear light weight, light colored, loose, cotton clothes, cover your head, use a cloth, hat or umbrella.
- Due to clear sky and strong sunlight insolation with heat wave conditions, the surface ozone will be predominated over isolated places, may cause discomfort to most of the people on prolonged exposure.

Impact & Action Suggested due to extremely heavy falls/ very heavy rainfall over

- ✓ **Extremely heavy rainfall** over Kerala & Mahe during 14th-16th, Coastal Karnataka during 12th-16th, South Interior Karnataka during 12th-14th and over North Interior Karnataka on 13th, Konkan & Goa on 13th & 14th, Tamilnadu Puducherry & Karaikal on 14th & 15th June.
- ✓ **Very heavy rainfall** over Tamilnadu Puducherry & Karaikal, Kerala & Mahe, Konkan & Goa, Madhya Maharashtra during 12th-16th, Coastal Karnataka on 16th, North Interior Karnataka during 12th-15th, South Interior Karnataka on 15th & 16th June.

Impact Expected

- Localized Flooding of roads, water logging in low lying areas and closure of underpasses mainly in urban areas of the above region.
- Occasional reduction in visibility due to heavy rainfall.
- Disruption of traffic in major cities due to water logging in roads leading to increased travel time.
- Minor damage to kutcha roads.
- Possibilities of damage to vulnerable structure.
- Localized Landslides/Mudslides/landslips/mudslips/landsinks/mudsinks.
- Damage to horticulture and standing crops in some areas due to inundation.
- It may lead to riverine flooding in some river catchments (for riverine flooding please visit Web page of CWC)

Action Suggested

- Check for traffic congestion on your route before leaving for your destination.
- Follow any traffic advisories that are issued in this regard.
- Avoid going to areas that face the water logging problems often.
- Avoid staying in vulnerable structure.

Impact expected and action suggested due to

- ❖ **Heat wave condition** very likely at many/some places over West Rajasthan during 10th-16th with **severe heat wave conditions** at isolated/some parts during 10th-13th June.
- ❖ **Heat wave to severe heat wave conditions** very likely at isolated/some parts are likely to prevail over East Rajasthan during 10th-13th June.
- ❖ **Heat wave conditions** are likely to prevail over East Uttar Pradesh on 10th & 11th, Punjab during 10th-13th, Jammu-Kashmir-Ladakh-Gilgit-Baltistan-Muzaffarabad, Himachal Pradesh, Haryana, West Uttar Pradesh, north Madhya Pradesh during 10th-12th June.

Red alert Areas

- Very high likelihood of developing heat illness and heat stroke in all ages.
- Extreme care needed for vulnerable people.

Orange alert Areas:

- High temperature & increased likelihood of heat illness symptoms in people who are either exposed to sun for a prolonged period or doing heavy work.
- High health concern for vulnerable people e.g. infants, elderly, people with chronic diseases.
- Avoid heat exposure- keep cool. Avoid dehydration.
- Drink sufficient water- even if not thirsty.
- Use ORS, homemade drinks like lassi, torani (rice water), lemon water, buttermilk, etc. to keep yourself hydrated.

Yellow alert Areas:

- Moderate temperature & heat is tolerable for general public but moderate health concern likely for vulnerable people e.g. infants, elderly, people with chronic diseases.
- Avoid heat exposure.
- Wear lightweight, light colour, loose, cotton clothes.
- Cover your head, use a cloth, hat or umbrella.

Impact expected and action suggested due to isolated thunderstorm with lightning/gusty & Squally winds over

Thundersquall (wind speed reaching 50-60 kmph gusting to 70 kmph) at isolated places over Madhya Maharashtra, Marathwada, Konkan & Goa during 12th-14th, Vidarbha on 11th & 12th, Chhattisgarh during 11th-14th, Bihar on 12th& 13th June.

Strong surface winds (speed 50-60 kmph) very likely over Coastal Andhra Pradesh & Yanam, Rayalaseema during 10th -12th, Kerala & Mahe, Lakshadweep on 14th June.

Impact expected:

- Breaking of tree branches, uprooting of large avenue trees. Large dead limbs blown from trees. Damage to Standing crops.
- Minor to Major damage to banana and papaya trees.
- Minor to major damage to power and communication lines due to breaking of branches.
- Strong wind/hail may damage plantation, horticulture and standing crops.
- Partial damage to vulnerable structures due to strong winds.
- Minor damage to kutcha houses/walls and huts.
- Loose objects may fly.

Action suggested:

- People are advised to keep a watch on the weather for worsening conditions and be ready to move to safer places accordingly.
- Stay indoors, close windows & doors and avoid travel if possible.
- Take safe shelters; do not take shelter under trees.
- Do not lie on concrete floors and do not lean against concrete walls.
- Unplug electrical/ electronic appliances.
- Immediately get out of water bodies.
- Keep away from all the objects that conduct electricity.

Agromet advisories for likely impact of Rainfall / Gusty Winds / Heat Wave

- Drain out excess water and ensure proper drainage in standing crops, vegetables and orchards in **Tamil Nadu, Kerala, Karnataka, Andhra Pradesh, Telangana, Madhya Maharashtra, Marathwada** and NMMT.
- Provide mechanical support and propping to horticultural crops and staking to vegetables to avoid lodging.
- In **Jammu & Kashmir, Himachal Pradesh, Punjab, Haryana, Uttar Pradesh, Rajasthan** and **north Madhya Pradesh** apply light and frequent irrigation in the evening to protect standing crops, vegetables and orchards from the adverse effects of heat waves and high temperatures. Undertake mulching with crop residue, straw, polythene or soil to conserve soil moisture.

Livestock / Poultry / Fishery

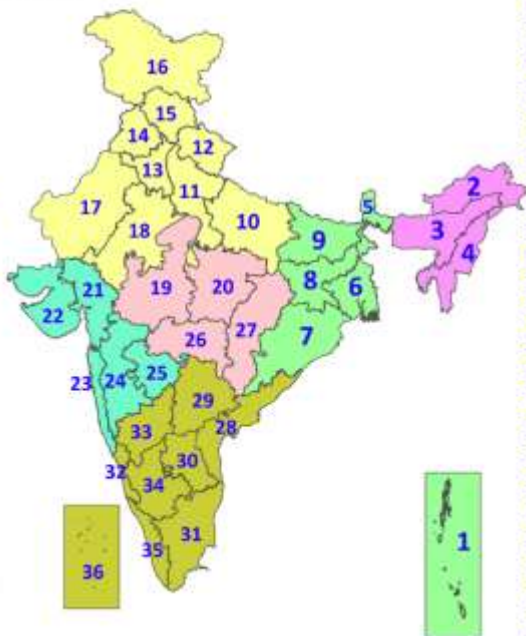
- Keep the animals inside the shed during heavy rainfall / hailstorm and provide them balanced feed.
- Store feed and fodder in a safe place to prevent spoilage.
- Construct an outlet with proper netting around the ponds to drain out excess water, thereby preventing fish from escaping in case of overflow.
- To reduce the effect of heat wave/high temperature, cover the roof of poultry sheds with grass. Also, provide clean, hygienic and plenty of drinking water to animals.

Legends & abbreviations:

- ❖ **Heavy Rain:**64.5-115.5mm; **Very Heavy Rain:**115.6-204.4mm; **Extremely Heavy Rain:** >204.4mm.
- ❖ **Obsy:** Observatory; Automatic Weather Station; **ARG:** Automatic Rain Gauge; **dist:** District; **NH:** National Highway; **KVK:** Krishi Vigyan Kendra; **DVC:** Damodar Valley Corporation; **PTO:** Part Time Office, **Aero:** Aerodrome, **IAF:** Indian Air Force.
- ❖ **Region wise classification of meteorological Sub-Divisions:**
 - **Northwest India:** Western Himalayan Region (Jammu-Kashmir-Ladakh-Gilgit-Baltistan-Muzaffarabad, Himachal Pradesh and Uttarakhand); Punjab, Haryana-Chandigarh-Delhi; West Uttar Pradesh, East Uttar Pradesh, West Rajasthan and East Rajasthan.
 - **Central India:** West Madhya Pradesh, East Madhya Pradesh, Vidarbha and Chhattisgarh.
 - **East India:** Bihar, Jharkhand, Sub-Himalayan West Bengal & Sikkim; Gangetic West Bengal, Odisha and Andaman & Nicobar Islands.
 - **Northeast India:** Arunachal Pradesh, Assam & Meghalaya and Nagaland, Manipur, Mizoram & Tripura.
 - **West India:** Gujarat Region, Saurashtra & Kutch, Konkan & Goa, Madhya Maharashtra and Marathawada.
 - **South India:** Coastal Andhra Pradesh & Yanam, Telangana, Rayalaseema, Coastal Karnataka, North Interior Karnataka, South Interior Karnataka, Kerala & Mahe, Tamil Nadu, Puducherry & Karaikal and Lakshadweep.

LEGENDS

1. अंडमान और निकोबार द्वीपसमूह
2. अरुणाचल प्रदेश
3. असम और मेघालय
4. नागालैंड, मणिपुर, मिजोरम और त्रिपुरा
5. उप-हिमालयी पश्चिम बंगाल और सिक्किम
6. गंगीय पश्चिम बंगाल
7. ओडिशा
8. झारखंड
9. बिहार
10. पूर्वी उत्तर प्रदेश
11. पश्चिम उत्तर प्रदेश
12. उत्तराखंड
13. हरियाणा, चंडीगढ़ और दिल्ली
14. पंजाब
15. हिमाचल प्रदेश
16. जम्मू और कश्मीर और लद्दाख
17. पश्चिम राजस्थान
18. पूर्वी राजस्थान
19. पश्चिम मध्य प्रदेश
20. पूर्वी मध्य प्रदेश
21. गुजरात
22. सौराष्ट्र
23. कोंकण और गोवा
24. मध्य महाराष्ट्र
25. मराठवाड़ा
26. विदर्भ
27. छत्तीसगढ़
28. तटीय आंध्र प्रदेश और यनम
29. तेलंगाना
30. रायलसीमा
31. तमिलनाडु, पुडुचेरी और कराईकल
32. तटीय कर्नाटक
33. आंतरिक उत्तरी कर्नाटक
34. आंतरिक दक्षिणी कर्नाटक
35. केरल और माहे
36. लक्षद्वीप



1. Andaman & Nicobar Islands
2. Arunachal Pradesh
3. Assam & Meghalaya
4. Nagaland, Manipur, Mizoram & Tripura
5. Sub-Himalayan West Bengal & Sikkim
6. Gangetic West Bengal
7. Odisha
8. Jharkhand
9. Bihar
10. East Uttar Pradesh
11. West Uttar Pradesh
12. Uttarakhand
13. Haryana, Chandigarh & Delhi
14. Punjab
15. Himachal Pradesh
16. Jammu & Kashmir and Ladakh
17. West Rajasthan
18. East Rajasthan
19. West Madhya Pradesh
20. East Madhya Pradesh
21. Gujarat
22. Saurashtra
23. Konkan & Goa
24. Madhya Maharashtra
25. Marathwada
26. Vidarbha
27. Chhattisgarh
28. Coastal Andhra Pradesh & Yanam
29. Telangana
30. Rayalaseema
31. Tamilnadu, Puducherry & Karaikal
32. Coastal Karnataka
33. North Interior Karnataka
34. South Interior Karnataka
35. Kerala & Mahe
36. Lakshadweep

SPATIAL DISTRIBUTION (% of Stations reporting)

% Stations	Category	% Stations	Category
76-100	Widespread (WS/Most Places)	26-50	Scattered (SCT/A Few Places)
51-75	Fairly Widespread (FWS/Many Places)	1-25	Isolated (ISOL)



Heavy Rain

Very Heavy Rain

Extremely Heavy Rain

Thunder & Lightning

Hailstorm

Dust Raising Winds

Heavy Snow

Dust Storm

Heat Wave

Warm Night

Hot Day

Hot & Humid

Strong Surface Winds

Cold Wave

Cold Day

Ground Frost

COLOUR CODED WARNING

No Warning (No Action)

Watch (Be Aware)

Alert (Be Prepared To Take Action)

Warning (Take Action)

Probabilistic Forecast

Terms	Probability of Occurrence (%)
Unlikely	< 25
Likely	25 - 50
Very Likely	50 - 75
Most Likely	> 75

* Red colour warning does not mean "Red Alert", Red colour warning means "Take Action".

Forecast and Warning for any day is valid from 0830 hours IST of day till 0830 hours IST of next day.

For more details, kindly visit <https://mausam.imd.gov.in> or contact: 011-2434-4599

(Service to the Nation since 1875)

DEFINITION/CRITERIA

Rain/ Snow *

Heavy: 64.5 to 115.5 mm/cm *
Very Heavy: 115.6 to 204.4 mm/cm *
Extremely Heavy: > 204.4 mm/cm *

Heat Wave

When maximum temperature of a station reaches $\geq 40^{\circ}\text{C}$ for plains and $\geq 30^{\circ}\text{C}$ for hilly regions
(a) Based on Departure from normal

Heat Wave: Maximum Temperature Departure from normal 4.5°C to 6.4°C .

Severe Heat Wave: Maximum Temperature Departure from normal $\geq 6.5^{\circ}\text{C}$

(b). Based on Actual maximum temperature

Heat Wave: When actual maximum temperature $\geq 45^{\circ}\text{C}$.

Severe Heat Wave: When actual maximum temperature $\geq 47^{\circ}\text{C}$.

(c). Criteria for heat wave for coastal stations

When maximum temperature departure is $> 4.5^{\circ}\text{C}$ from normal. Heat Wave may be described provided maximum temperature $\geq 37^{\circ}\text{C}$.

Warm Night

When maximum temperature remains 40°C

Warm Night: When minimum temperature departure 4.5°C to 6.4°C .

Severe Warm Night: When minimum temperature departure $> 6.4^{\circ}\text{C}$.

Cold Wave

When minimum temperature of a station $\leq 10^{\circ}\text{C}$ for plains and $\leq 0^{\circ}\text{C}$ for hilly regions.

(a). Based on departure

Cold Wave: Minimum Temperature Departure from normal -4.5°C to -6.4°C .

Severe Cold Wave: Minimum Temperature Departure from normal $\leq -6.5^{\circ}\text{C}$

(b) Based on actual Minimum Temperature (for Plains only)

Cold Wave: When Minimum Temperature is $\leq 4.0^{\circ}\text{C}$

Severe Cold Wave: When Minimum Temperature is $\leq 2.0^{\circ}\text{C}$

(c) For Coastal Stations

When Minimum Temperature departure is $\leq -4.5^{\circ}\text{C}$ & actual Minimum Temperature is $\leq 15^{\circ}\text{C}$

Cold Day

When minimum temperature of a station $\leq 10^{\circ}\text{C}$ for plains and $\leq 0^{\circ}\text{C}$ for hilly regions

Based on departure

Cold Day: Maximum Temperature Departure from normal -4.5°C to -6.4°C .

Severe Cold Day: Maximum Temperature Departure from normal $\leq -6.5^{\circ}\text{C}$

Fog

Phenomenon of small droplets suspended in air and the horizontal visibility $< 1\text{km}$

Moderate Fog: When the visibility between 500-200 metres

Dense Fog: when the visibility between 50- 200 metres

Very Dense Fog: when the visibility < 50 metres

Thunderstorm

Sudden electrical discharges manifested by a flash of light (Lightning) and a sharp rumbling sound (thunder)

Dust/Sand Storm

An ensemble of particles of dust or sand energetically lifted to great heights by a strong and turbulent wind.

Frost

Ice deposits on ground

Air temperature $\leq 4^{\circ}\text{C}$ (over Plains)

Squall

A strong wind that rises suddenly, lasts for atleast 1 minute.

Moderate: Wind speed 52-61 kmph

Severe: Wind speed 62-67 kmph

Very Severe: Wind speed > 67 kmph

Sea State

Effect of various waves in the sea over specific area

Rough to very rough: Wind speed 41-62 kmph (22-33 knots) & Wave height 2.5-6 metre

High to very high: Wind speed 63-117 kmph (34-63 knots) & Wave height 6-14 metre

Phenomenal: Wind speed > 117 kmph (> 63 knots) & Wave height > 14 metre

Cyclone

Cyclonic Storm: Wind speed 62-87 kmph (34-47 knots)

Severe Cyclonic Storm: Wind speed 88-117 kmph (48-63 knots)

Very Severe Cyclonic Storm: Wind speed 118-165 kmph (64 - 89 knots)

Extremely Severe Cyclonic Storm: Wind speed 166-220 kmph (90 -119 knots)

Super Cyclone Storm: Wind speed > 220 kmph (> 119 knots)

* Red colour warning does not mean "Red Alert", Red colour warning means "Take Action".

Forecast and Warning for any day is valid from 0830 hours IST of day till 0830 hours IST of next day.

For more details, kindly visit <https://mausam.imd.gov.in> or contact: 011-2434-4599

(Service to the Nation since 1875)

Hot and Humid: When maximum temperatures remain 3°C above normal along with the above normal relative humidity.